

# MS/MSX

OFF GRID SOLAR INVERTER

**inpowers**  
integrated power solutions

## MAXIMUM Power Point Tracking

MPPT 25A/60A!

LCD DISPLAY

HIGH FREQUENCY

PURE SINE WAVE

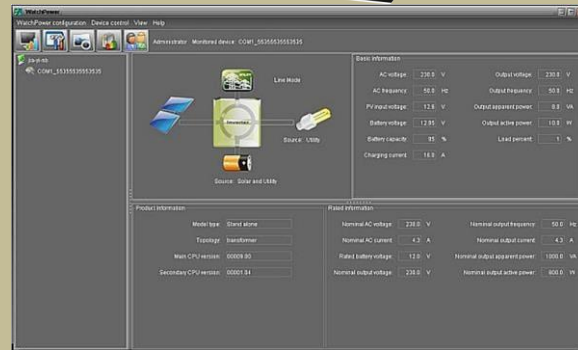
AC CHARGER

USB PORT

STACKABLE\*

PB ACID/LIFEPO4

\* Only on 48V models



MONITORING SOFTWARE — WATCHPOWER

### KEY FEATURES

- Built-in MPPT 60A solar charger
- Max AC charging up to 60A (48v models only)
- Max total system charging: 60A + 60A = 120A !!
- High frequency, light-weight design
- Highly programmable menu
- Wide AC input range
- Adjustable Bulk/Float Voltage
- Supports various lead acid batteries, LiFePo4\*
- Inverter+ AC Charger + Solar Charger 3-in-1 design
- Pure sine wave output
- 2X surge capacity up to 5 seconds
- USB communication
- LCD monitor display system info + LED indicators
- FREE monitoring software included
- Built-in generator starter dry contact\*\*
- Overload/Overtemp/short circuit protections
- Cold start capability (requires DC)

Only 48V models are PARALLEL-READY.  
Optional Parallel Kit required for all units  
in parallel and sold separately.

\*For LiFePo4 suitability, please check with your battery supplier on charging and BMS requirement.

\*\* Inverter-Generators are recommended for better compatibility

824      1624      2424      2424MSX      3248      4048

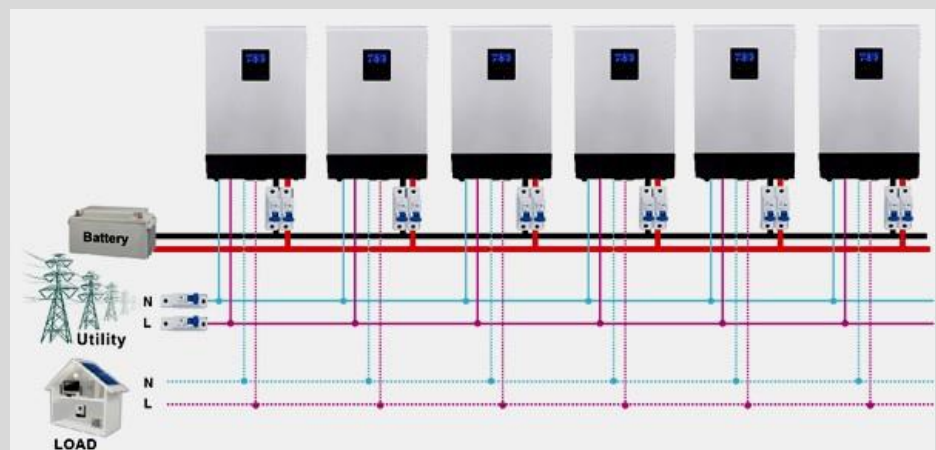
**NEW** 1624MSX

ELECTRICAL SPECIFICATIONS						
Continuous/Surge Output	800 / 1600W	1.6 / 3.2KW	2.4 / 4.8KW	2.4 / 4.8KW	3.2 / 6.4KW	4.0 / 8.0KW
Surge Rating	5 seconds max, 2X					
Input Power Factor	0.8					
Input Voltage Range	90~280VAC (Appliance mode), 170~280VAC (UPS mode)					
Input/Output Frequency	50Hz / 60Hz					
Output Voltage	230VAC±5%					
Output Waveform	Pure Sine Wave					
Output Regulation/THD	< 3% RMS for battery voltage range					
Output Short Circuit	Circuit Breaker					
Peak Efficiency	91%	93%				
Nominal DC Voltage	24V (MAX 30V)			48V (MAX 60V)		
Transfer Time	<10ms (UPS mode), <20ms (Appliance mode)**					
Charging Mode	3-stage					
Boost Voltage (Flooded/MF)	29.2V/28.2V			58.4V/56.4V		
Float Voltage (Flooded/MF)	27.0V/27.0V			54.0V/54.0V		
AC Recharging Current	10/20amp	20/30amp		<b>60 amp</b>		
No Load Power Consumption	<25W			<50W		
Power Saving Consumption	<10W			<15W		
Solar Charger						
Max PV Input / Output	<b>600W</b>		<b>1500W</b>	<b>3000W</b>		
Max Charging Current	<b>MPPT 25A</b>		<b>MPPT 60A</b>			
Max PV Input Voc, MPPT Range	<b>75V, 30~66V</b>		<b>145V, 30~115V</b>	<b>145V, 60~115V</b>		
Standby Power	<b>2W</b>		<b>2W</b>			
ENVIRONMENTAL / MECHANICAL SPECIFICATIONS						
Certification	CE					
Operating/Storage Temp.	0°C ~ 55°C / -15°C~ 60°C					
Operating Humidity	20~90%RH Non-Condensing					
Dimension	355*272*100mm			479*295*140mm	468*295*140mm	
Net Weight	7.0Kg	7.1Kg	7.5Kg	11.8Kg	11.5Kg	11.5Kg

\*\* Transfer time may be longer (30ms) when used in parallel configuration and this may cause interruption in certain load.

**1 YEAR STANDARD WARRANTY PERIOD (3 YEARS EXTENDED)**

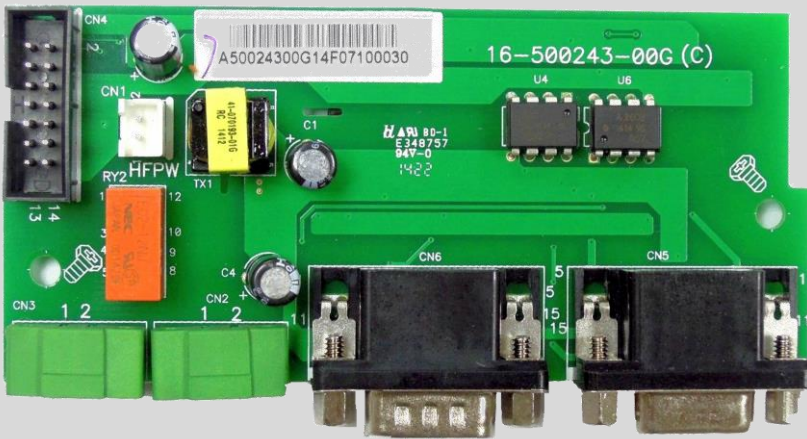
**NEW**  
**Parallel Support**  
**now up to 6 units**  
**max! (24kw based**  
**on 4kw/unit)**



\*Product specifications are subject to change without prior notice



# PARALLEL KIT



This accessory is applicable only to the 48VDC models of HS and MS series inverter. It is a required component to be installed in every unit of a parallel system. A parallel kit includes:

- 1 X PARALLEL BOARD
- 1 X PARALLEL COMM CABLE
- 1 X CURRENT SHARING CABLE

**\*IMPORTANT:** please do not wire 12v or 24v HS/MS inverters in parallel, as this will result instant damage of all units!

# REMOTE CONTROL DISPLAY MODULE



This device is an extension of the HS/MS inverter's LCD module and allows user to implement control on settings and monitoring from a distance away.

This remote module can coexist with the built-in LCD device and is compatible with all models 12v/24v/48v in the HS/MS inverter series.

**\*Maximum operating distance: 15m via RJ45 network cable**